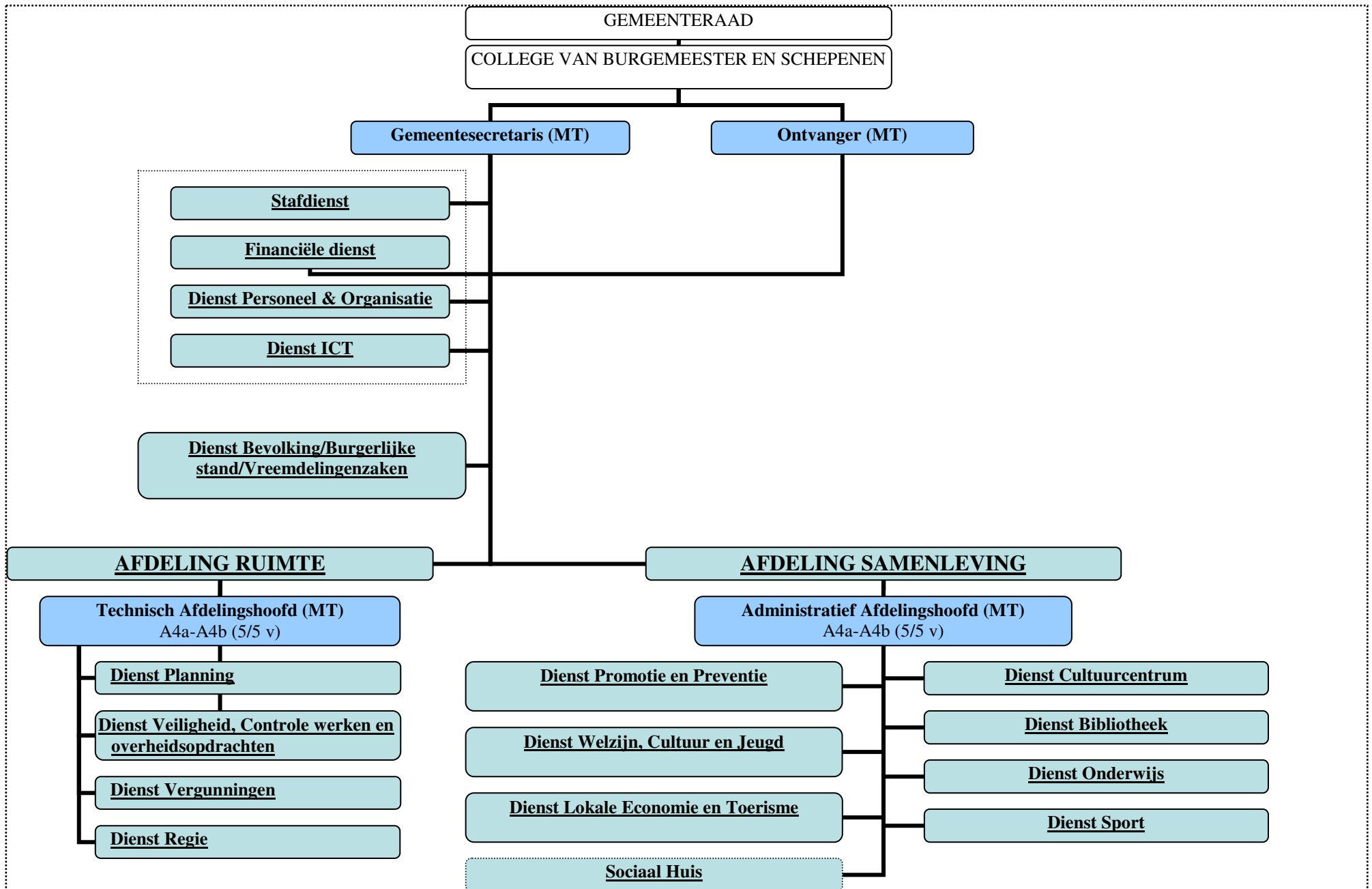
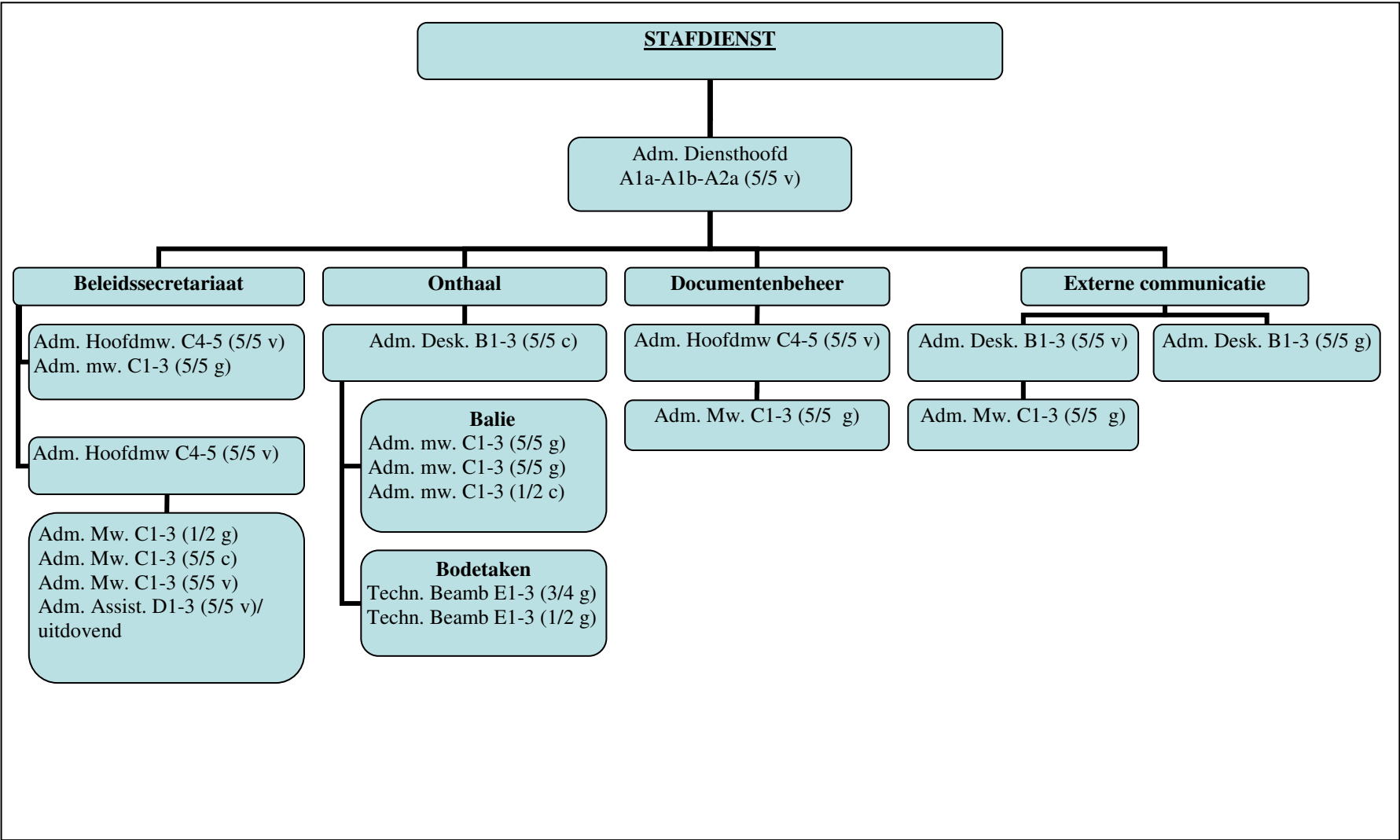


B/ ORGANOGRAM GEMEENTE HOUTHALEN-HELCHTEREN (juni 2008)





FINANCIËLE DIENST

Gemeenteontvanger (MT)

Politieboekhouding
Adm. Desk. B1-3 (1/2 c)

Gemeenteboekhouding
Adm. Desk. B1-3 (1/2 c)

Controle externe instellingen
Adm. Desk. B1-3 (1/2 g)

Adm. Desk. B1-3 (5/5 v)

Financiën

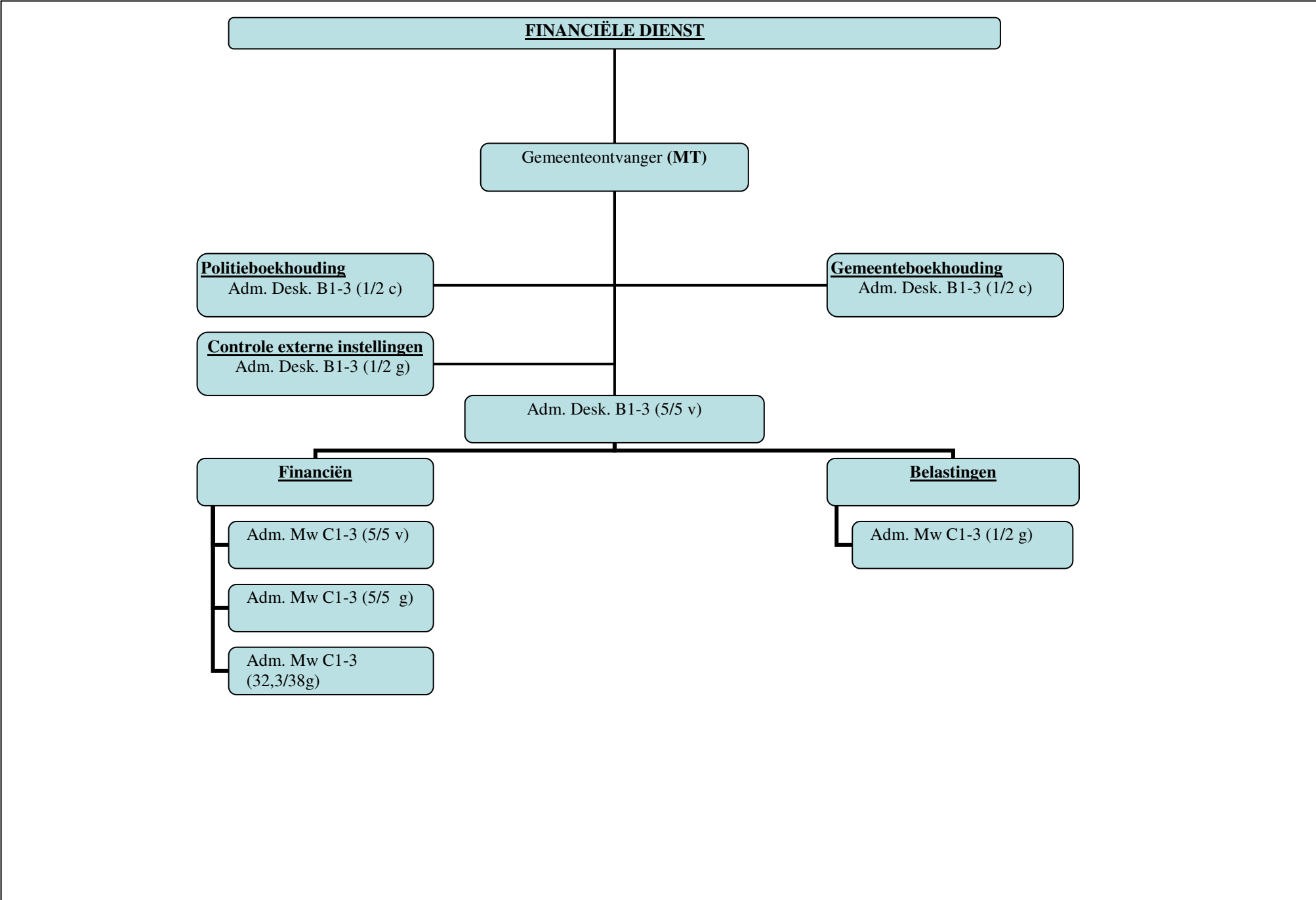
Adm. Mw C1-3 (5/5 v)

Adm. Mw C1-3 (5/5 g)

Adm. Mw C1-3
(32,3/38g)

Belastingen

Adm. Mw C1-3 (1/2 g)



DIENST PERSONEEL & ORGANISATIE

Adm. Diensthoofd
A1a-A1b-A2a (5/5 v)

HRM

Adm. Hoofdmw C4-5 (5/5 v)

Adm. Mw C1-3 (5/5 g)

Adm. Mw C1-3 (5/5 g)

Loonadministratie

Adm. Hoofdmw C4-5 (5/5 v)

Adm. Mw C1-3 (5/5 g)
(uitdovend)

Adm. Mw C1-3 (5/5 c)

Adm. Mw C1-3 (5,5/10 g)

**DIENST INFORMATIE- &
COMMUNICATIETOEPASSINGEN
(ICT)**

Adm. Diensthoofd
A1a-A1b-A2a (5/5 v)

Drukkerij
Adm. Mw. C1-3 (5/5 c)

GIS
Adm. Desk. B1-3 (5/5 c)

Adm. Desk. B1-3 (5/5 c)

Adm. Mw. C1-3 (15,2/38 g)

DIENST BEVOLKING, BURGERLIJKE STAND, VREEMDELINGENZAKEN

Adm. Diensthoofd
A1a-A2a-A1b (5/5 v)

Adm. hoofdmw. C4-5 (5/5 v)

Adm. mw. C1-3 (5/5 v)

Adm. mw. C1-3 (5/5 v)

Adm. mw. C1-3 (5/5 g)

Adm. mw. C1-3 (5/5 g)

Adm. mw. C1-3 (5/5 g)

Adm. mw. C1-3 (5/5 g)

Adm. mw. C1-3 (5/5 g)

Adm. mw. C1-3 (4/5 g)

Adm. mw. C1-3 (1/2 g) (zomerwerker)

Adm. assist. D1-3 (5/5 g) (uitdovend)

AFDELING RUIMTE

Techn. Afdelingshoofd
A4a-A4b (5/5 v) (MT)

Adm. Diensthoofd
A1a-A1b-A2a (5/5 v) / uitdovend

Dienst Planning

Adm. Diensthoofd
A1a-A1b-A2a (5/5 v)

Administratie

- Adm. Hoofdmw C4-5 (5/5 v)
- Adm. mw C1-3 (13,3/38 c)
- Adm. mw C1-3 (6,33/38 g)

Mobiliteit

- Adm. desk. B1-3 (5/5 v)

Milieu

- Adm. desk. B1-3 (5/5 g)

Duurzaamheid

- Adm. desk. B1-3 (5/5 c)

Dienst Vergunningen

Adm. Diensthoofd
A1a-A1b-A2a (5/5 v)

Administratie

- Adm. Hoofdmw C4-5 (5/5 v)

- Adm. Mw. C1-3 (5/5 g)
- Adm. Mw. C1-3 (5/5 g)
- Adm. Mw. C1-3 (1/2 g)
- Adm. Mw. C1-3 (1/2 g)
- Adm. Mw. C1-3 (5/5) /
Uitdovend

Vergunningenregister

- Adm. Mw. C1-3 (1/2 g)
- Adm. Mw. C1-3 (1/2 g)
- Adm. Mw. C1-3 (1/2 c)

Dienst Veiligheid, Controle & Overheidsopdrachten

- Adm. Diensthoofd
A1a-A1b-A2a (5/5 v)
- Adm. Hoofddesk
B4-5 (5/5 v) - uitdovend

Veiligheid

- Adm. mw C1-3 (13,3/38 c)

Overheidsopdrachten

- Adm. Hoofdmw C4-5 (5/5 v)

- Adm. Mw. C1-3 (5/5 v)
- Adm. Mw. C1-3 (5/5 c)
- Adm. Mw. C1-3 (5/5 g)
- Adm. Mw. C1-3 (6,33 g)
- Adm. Mw. C1-3 (5/5) /
Uitdovend

Controle werken

- Techn. desk. B1-3 (5/5 c)
- Techn. mw C1-3 (5/5 c)

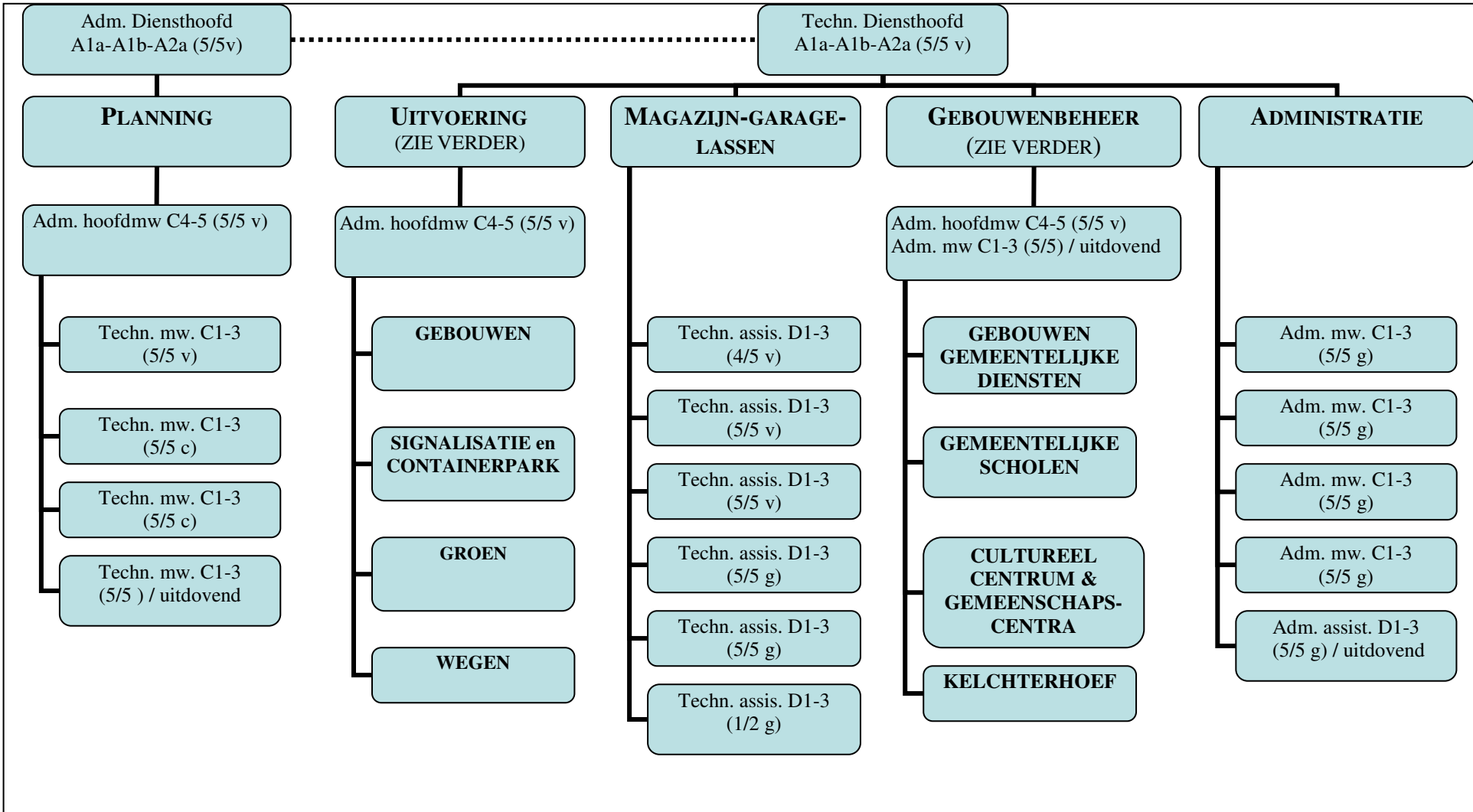
Dienst Regie

Adm. Diensthoofd
A1a-A1b-A2a (5/5 v)

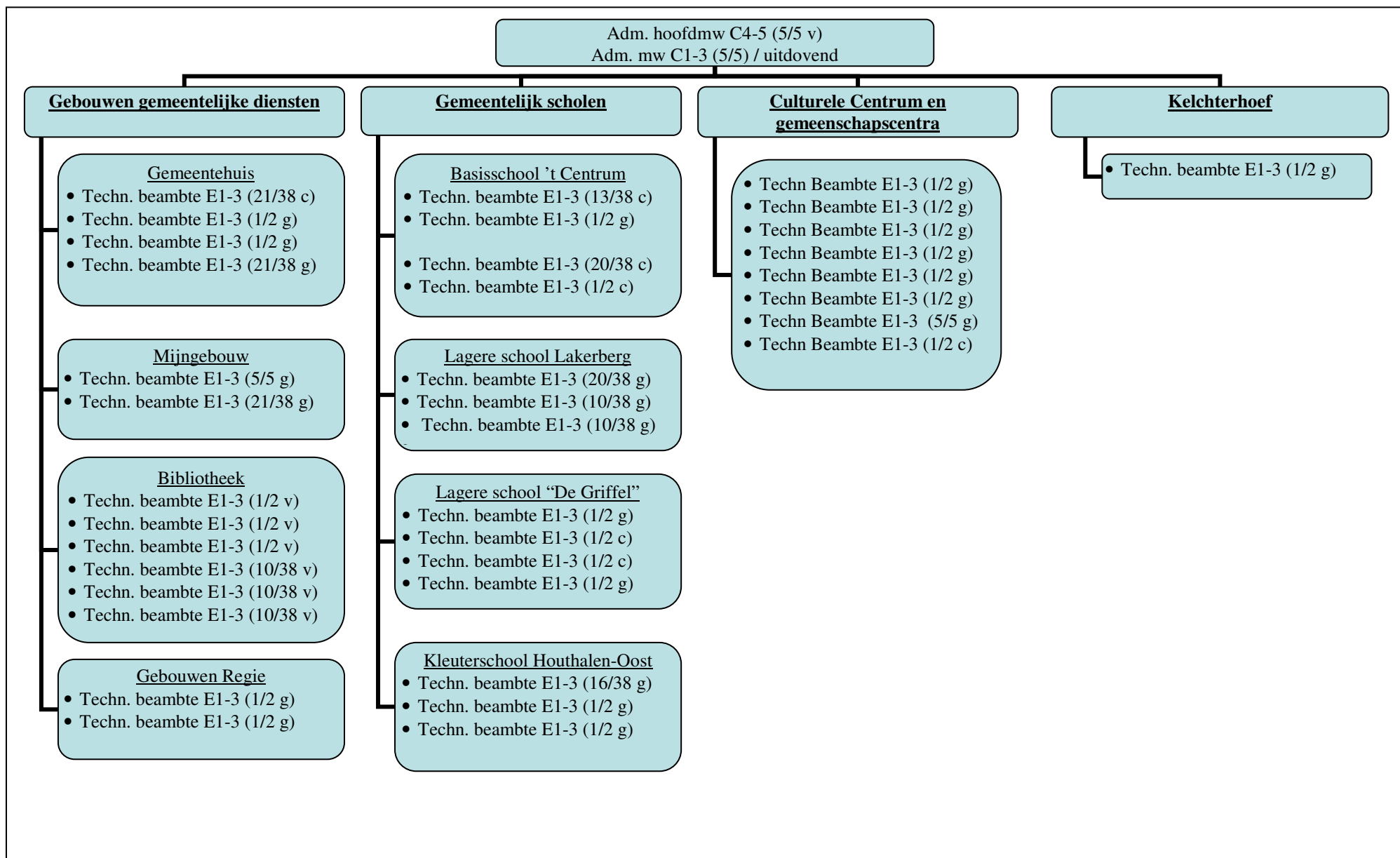
Techn. Diensthoofd
A1a-A1b-A2a (5/5 v)

Zie verder

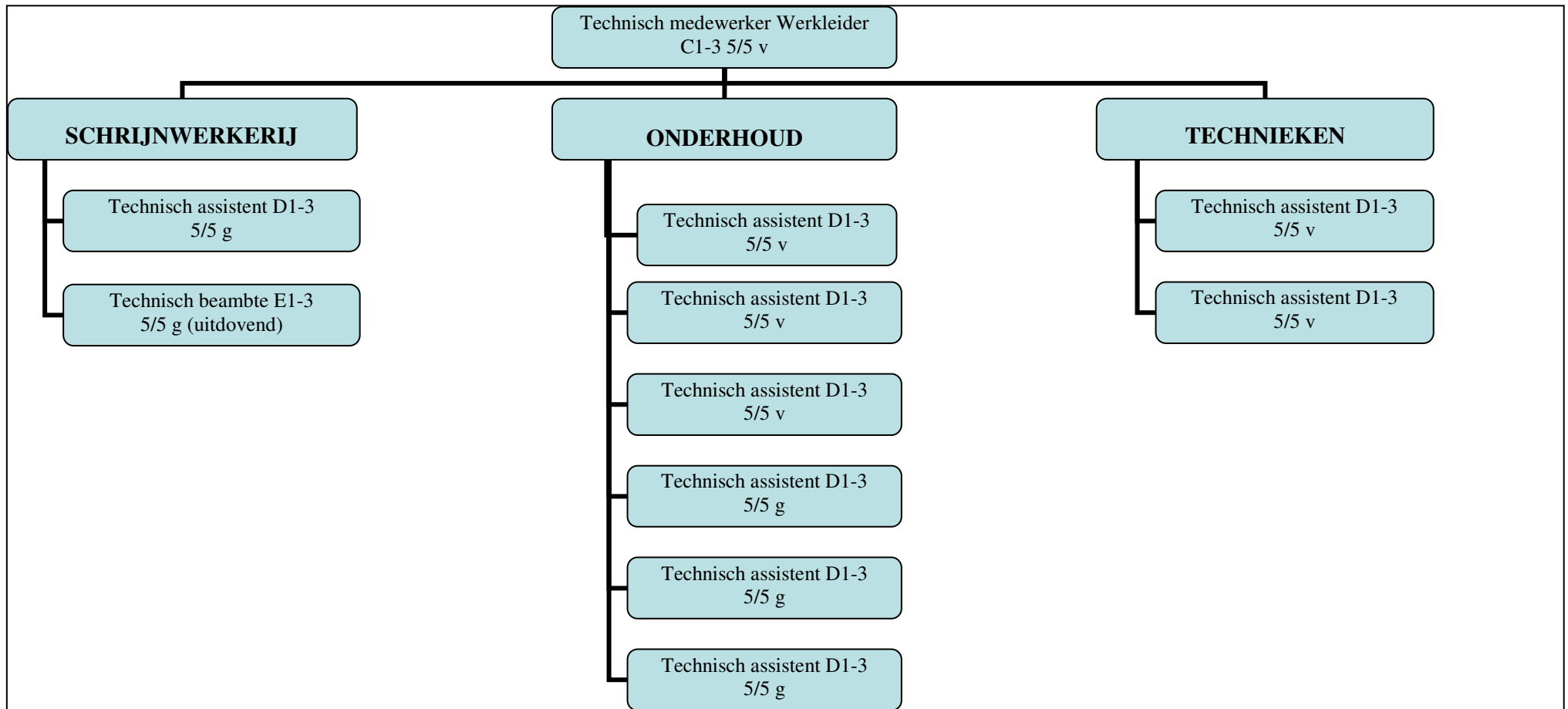
DIENST REGIE - LEIDING – LOGISTIEK - STAF



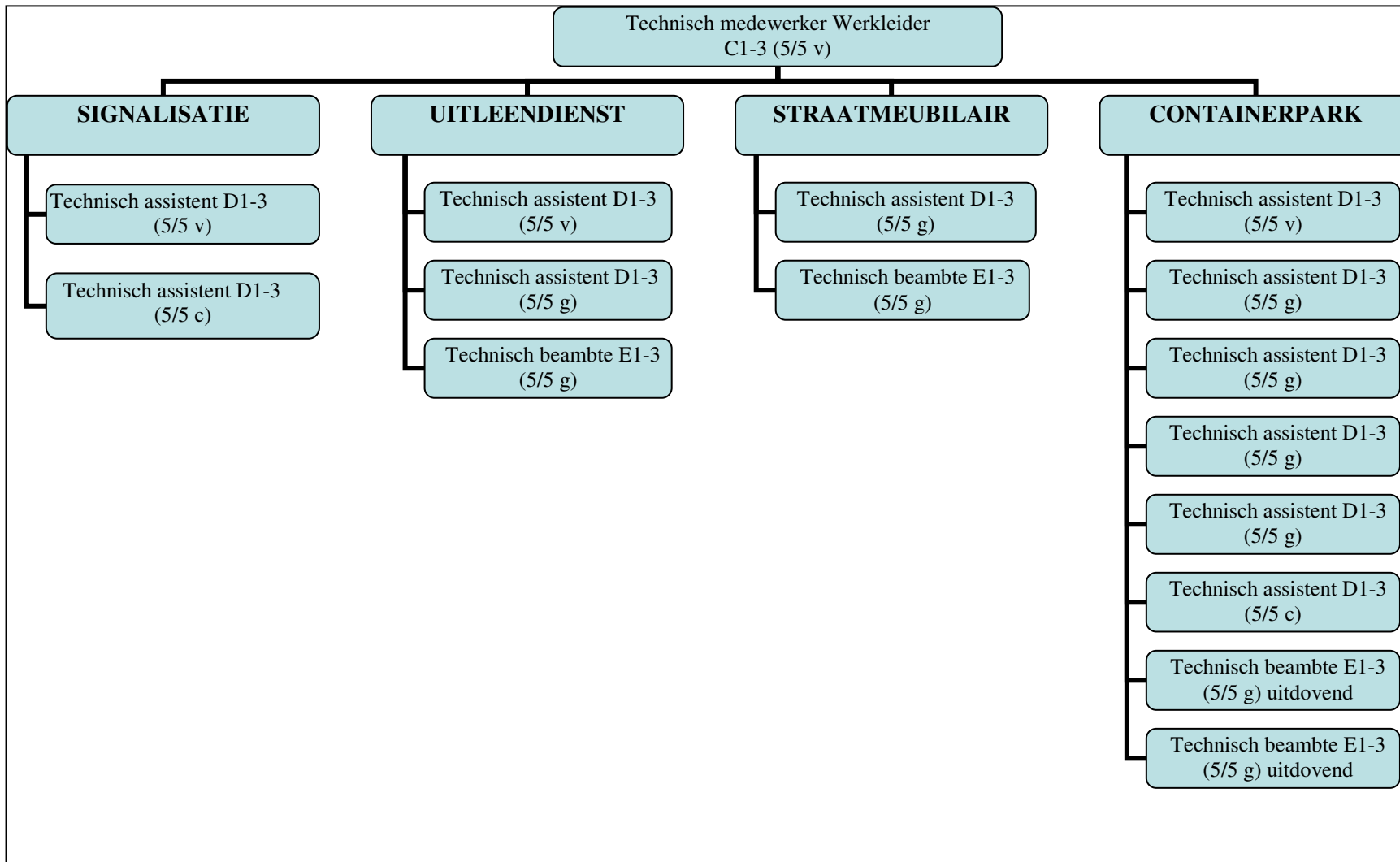
DIENST REGIE - GEBOUWENBEHEER



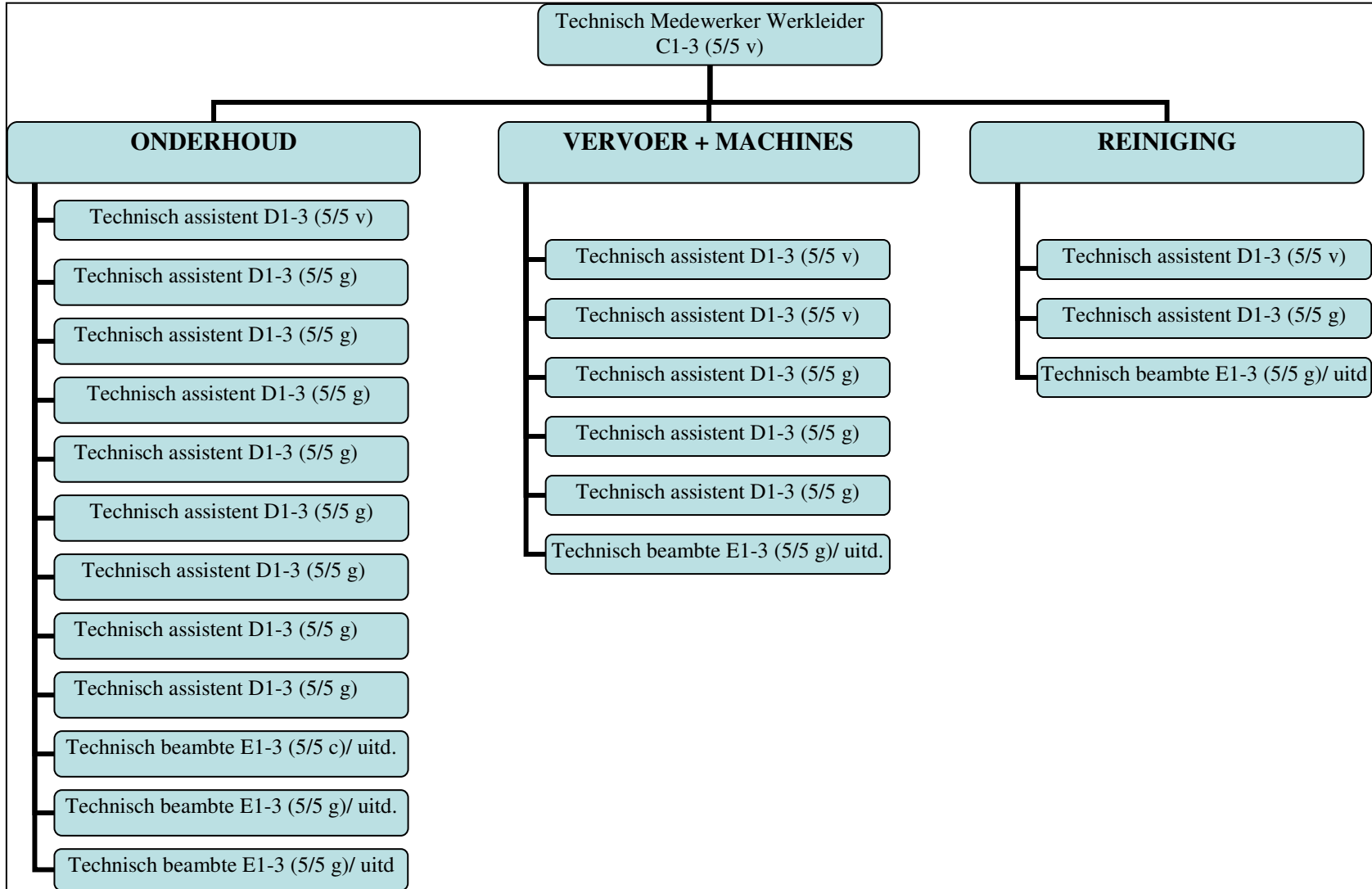
DIENST REGIE – UITVOERING: GEBOUWEN



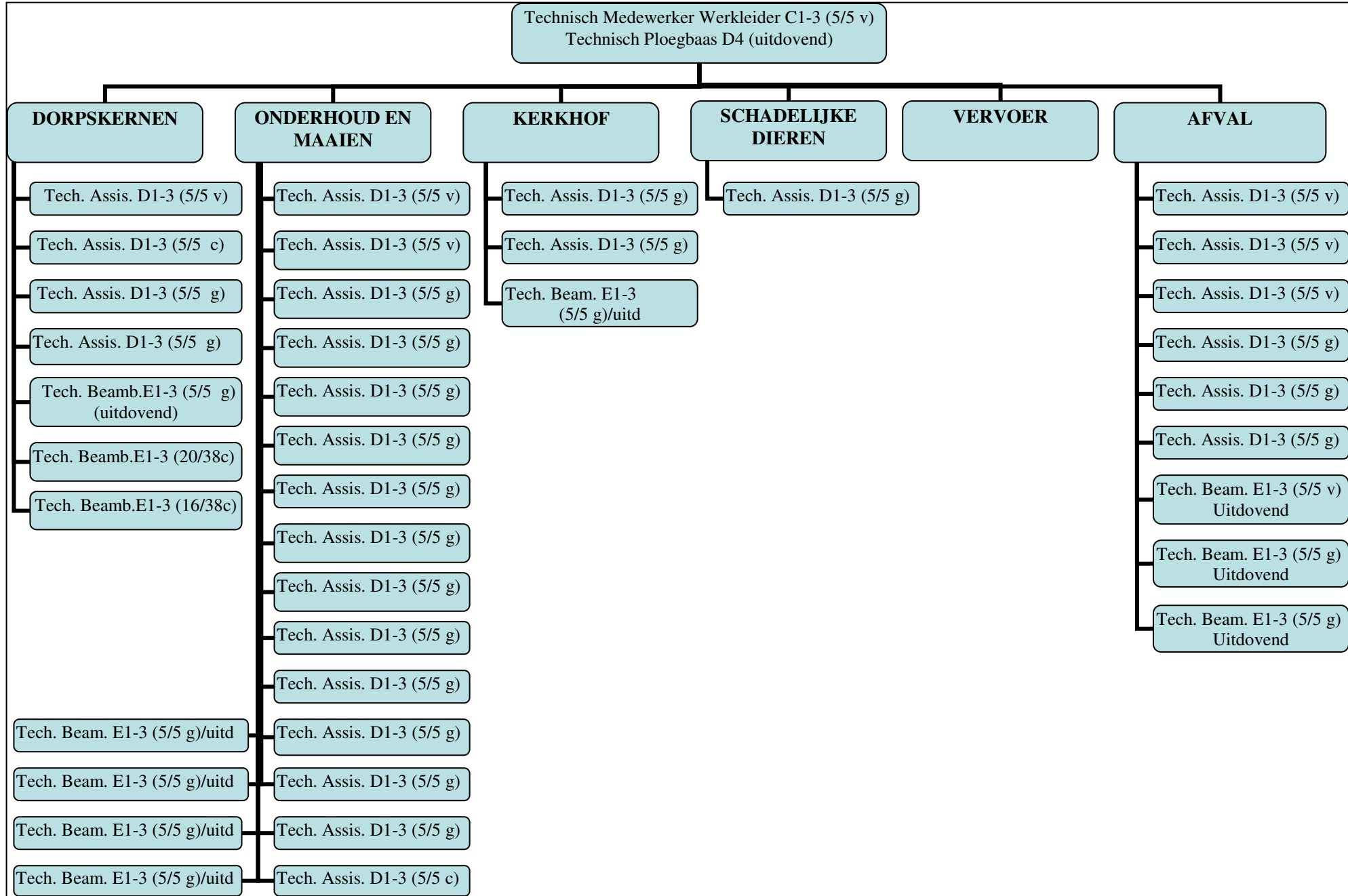
DIENST REGIE – UITVOERING: SIGNALISATIE



DIENST REGIE – UITVOERING: WEGEN



DIENST REGIE – UITVOERING: GROEN



AFDELING SAMENLEVING

Adm. Afdelingshoofd
A4a-A4b (5/5 v) (MT)

Dienst Promotie en Preventie

Dienst Cultuurcentrum

Dienst Welzijn, Cultuur en Jeugd

Dienst Sport

Dienst Lokale Economie en
Toerisme

Dienst Bibliotheek

Dienst Onderwijs

Sociaal Huis

DIENST PROMOTIE EN PREVENTIE

Adm. Diensthoofd A1a-A1b-A2a
(5/5 v)

Administratie

Adm. mw. C1-3 (2/3 c)
Adm. mw C1-3 (1/2 g)

Adm. assis. D1-3 (2/3 c)/ uitdovend
Adm. assis. D1-3 (1/2 g) / uitdovend

Adm. desk. B1-3 (1,5/5 c)

Balie

Adm. mw C1-3 (3/10 g)
Adm. mw C1-3 (5/5 g)
Adm. mw C1-3 (1/2 c)
Adm. mw C1-3 (5/5 g)
Adm. assist. D1-3 (5/5 g) / uitdovend

Promotie en communicatie

Adm. desk. B1-3 (5/5 v)
Adm. mw C1-3 (1/2 v)
Adm. mw C1-3 (5/5 g)
Adm. mw C1-3 (1/2 c)
Adm. assist. D1-3 (5/5 g) / uitdovend

Preventie

Adm. desk. B1-3 (3,5/5 c)
Adm. mw. C1-3 (5/5 c)

CAD

Adm. desk. B1-3 (5/5 c)
Adm. desk. B1-3 (5/5 c)
Adm. mw. C1-3 (5/5 c)

Straathoekwerk

Adm. mw. C1-3 (5/5 c)
Adm. mw. C1-3 (5/5 c)
Adm. assist. D1-3 (5/5 c) /
uitdovend

Gemeenschapswachten

Techn. assist. D1-3 (1/2 c)
Techn. assist. D1-3 (1/2 c)
Techn. assist. D1-3 (1/2 c)
Techn. assist. D1-3 (1/2 c)
Techn. beambte E1-3 (1/2 c) /
uitdovend
Techn. beambte E1-3 (1/2 c) /
uitdovend

Alternatieve Straffen

Techn. mw C1-3 (5/5 c)
Techn. mw C1-3 (5/5 c)

DIENST WELZIJN, CULTUUR EN JEUGD

Adm. Diensthoofd A1a-A1b-A2a
(5/5 v)

Adm. desk. B1-3 (1/2 c)
Adm. Mw C1-3 (9,5/38 g)
Adm. Mw C1-3 (28,5/38 g)
Adm. Mw C1-3 (5/5 c)
Adm. Mw C1-3 (5/5 g)
Adm. Mw C1-3 (7/10 g)
Adm. Mw C1-3 (1/3 c)
Adm. Assist. D1-3 (1/3 c) / uitdovend

Wijkwerking
Adm. desk B1-3 (5/5 c)

JWW Meulenberg
Adm. assist D1-3 (5/5 c)
Adm. assist D1-3 (5/5 c)
Techn. beambte E1-3 (5/5 c)

DIENST LOKALE ECONOMIE EN TOERISME

Adm. Diensthoofd A1a-A1b-A2a
5/5 v

Toeristische Trajecten

Adm. desk. B1-3 (5/5 v)
Adm. mw C1-3 (3/4 g)

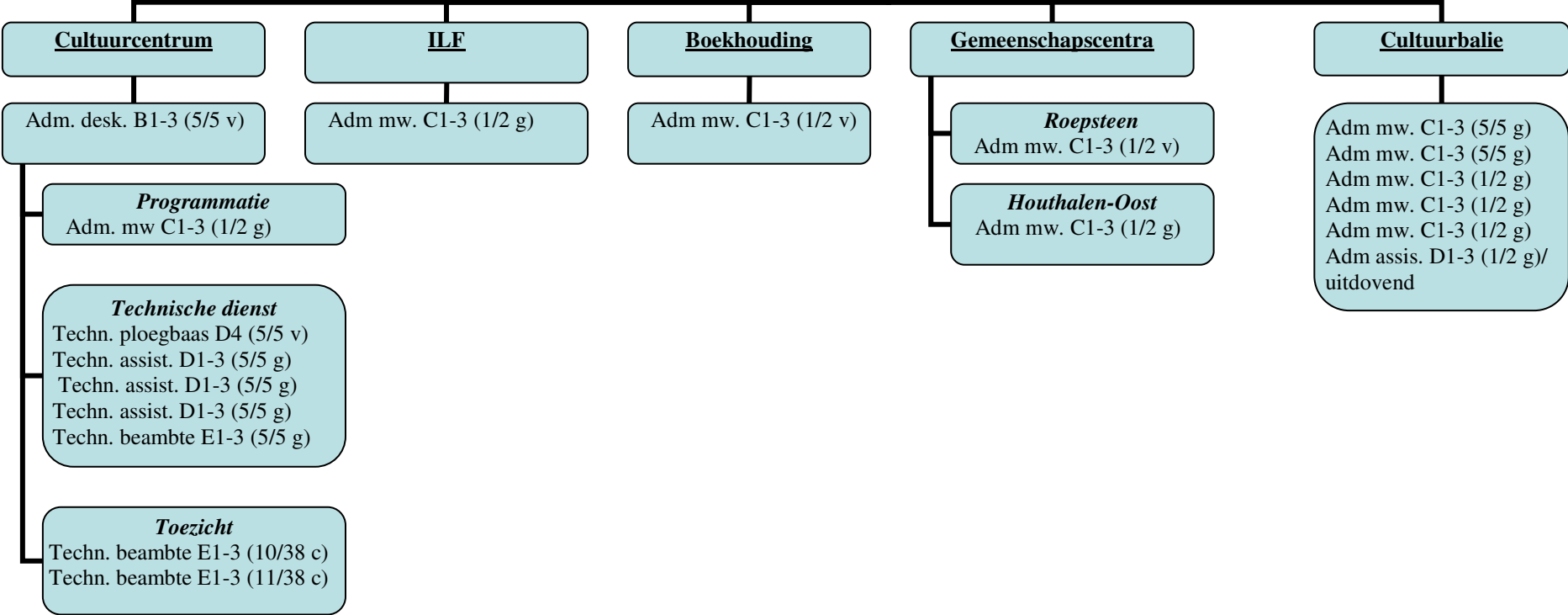
Lokale economie en evenementen

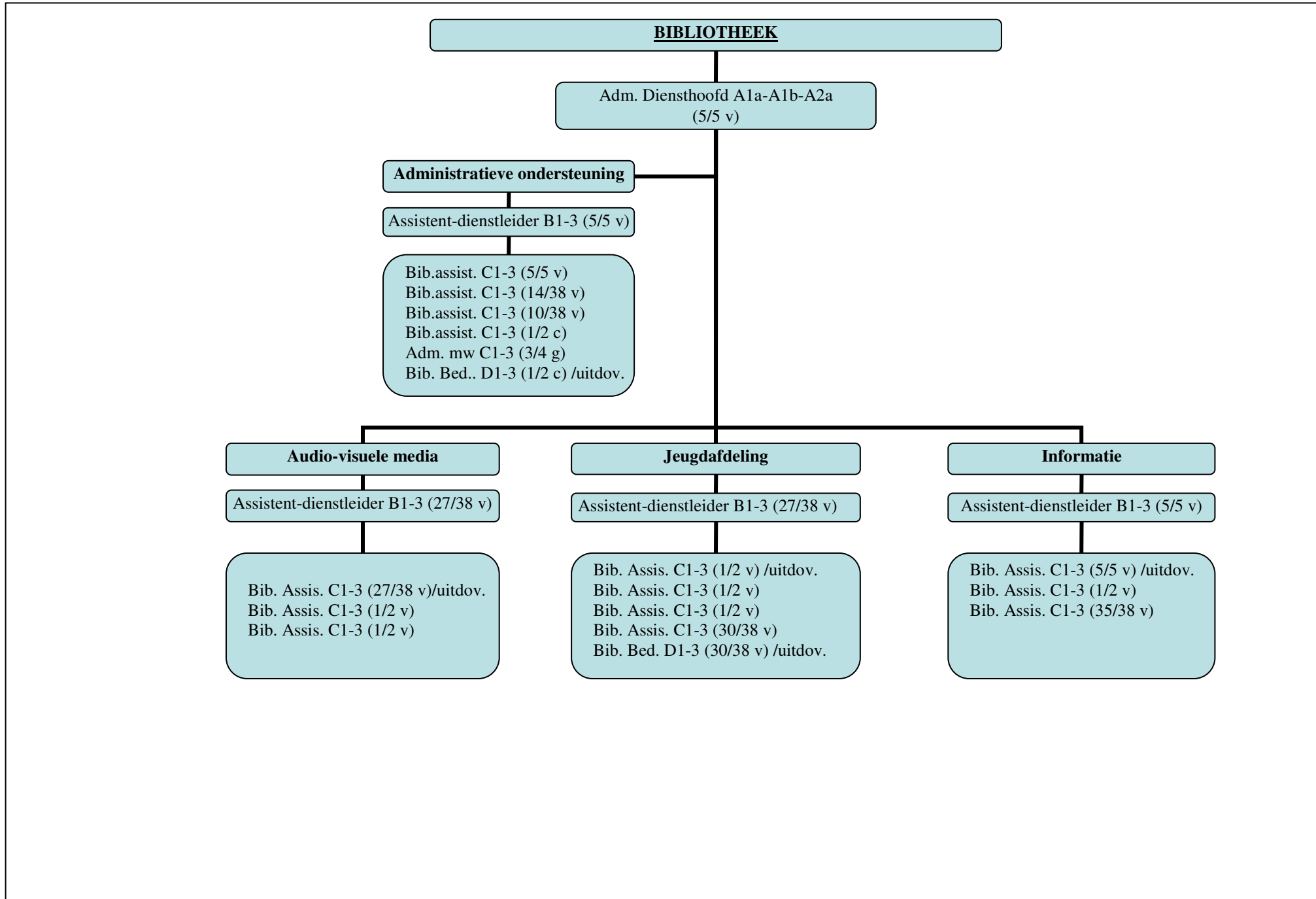
Adm. desk. B1-3 (5/5 c)
Adm. mw. C1-3 (5/5 g)
Adm. mw. C1-3 (5/5 g)
Adm. assist. D1-3 (5/5 g) / uitdovend

Techn. assist. D1-3 (5/5 c)
Techn. assist. D1-3 (5/5 c)
Techn. assist. D1-3 (5/5 g)
Techn beamb. E1-3 (5/5 g) / uitdovend

DIENST CULTUURCENTRUM

(extern)





DIENST ONDERWIJS

Adm. Diensthoofd A1a-A1b-A2a
(5/5 v)

Administratie

Adm mw. C1-3 (5/5 c)
Adm mw. C1-3 (1/38 c)

Schoolopbouwwerk

Adm. desk. B1-3 (5/5 c)
Adm. desk. B1-3 (5/5 c)
Adm. desk. B1-3 (1/2 c)
Adm mw. C1-3 (5/5 c)

DIENST SPORT

Adm. Diensthoofd A1a-A1b-A2a
(5/5 v)

Infrastructuur

Administratie

Sportpromotie

Adm. desk. B1-3 (5/5 v)
Adm. desk. B1-5 (5/5 g) (uitd.)

Adm mw. C1-3 (5/5 v)

Adm mw. C1-3 (1/2 v)

Adm. desk. B1-3 (5/5 g)

Adm. desk. B1-3 (4/5 g)

Adm. desk. B1-3 (1/2 g)

Onderhoud

Toezicht

Helchteren

Techn. Beambte E1-3 (20/38 c)
Techn. Beambte E1-3 (1/2 g)
Techn. Beambte E1-3 (5/38 g)

Helchteren

Techn. assist. D1-3 (5/5 g)
Techn. assist. D1-3 (5/5 g)
Techn. Beambte E1-3 (5/5g) (uitd)

Lakerveld

Techn. Beambte E1-3 (34/38 g)
Techn. Beambte E1-3 (10/38 g)
Techn. Beambte E1-3 (16/38 c)

Lakerveld/Berkenveld

Techn. assist. D1-3 (5/5 g)
Techn. assist. D1-3 (5/5 g)
Techn. assist. D1-3 (5/5 g)
Techn. assist. D1-3 (4/5g)
Techn. assist. D1-3 (5/5 g)
Techn. assist. D1-3 (5/5 g)
Techn. Beambte E1-3 (5/5 g) (uitd)

Houthalen-Oost

Techn. Beambte E1-3 (1/2 g)
Techn. Beambte E1-3 (29/38 g)

Houthalen-Oost

Techn. assist. D1-3 (5/5 c)
Techn. assist. D1-3 (5/5 g)

Berkenveld

Techn. Beambte E1-3 (1/2 c)

Vlinder

Techn. assist. D1-3 (5/5 g)

SOCIAAL HUIS

Adm. Diensthoofd A1a-A1b-A2a
(5/5 v)

Adm. mw. C1-3
(5/5 v)